

Gandy Dancer Archives

Volume 4 | Issue 2

Article 26

5-1-2016

c i n g u l u m

Sarah Simon
SUNY Geneseo

Follow this and additional works at: <https://knight scholar.geneseo.edu/gandy-dancer>



Part of the [Poetry Commons](#)

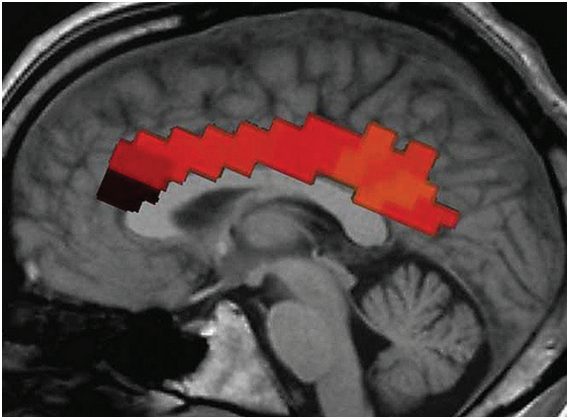
Recommended Citation

Simon, Sarah (2016) "c i n g u l u m," *Gandy Dancer Archives*: Vol. 4: Iss. 2, Article 26.
Available at: <https://knight scholar.geneseo.edu/gandy-dancer/vol4/iss2/26>

This Poetry is brought to you for free and open access by the Journals at KnightScholar. It has been accepted for inclusion in Gandy Dancer Archives by an authorized editor of KnightScholar. For more information, please contact KnightScholar@geneseo.edu.

SARAH SIMON

c i n g u l u m



It is an integral part of the limbic system, which is involved with emotion formation and processing, learning, and memory. The combination of these three functions makes the cingulate gyrus highly influential in linking behavioral outcomes to motivation (e.g. a certain action induced a positive emotional response, which results in learning). This role makes the cingulate cortex highly important in disorders such as depression and schizophrenia.

—“Cingulate cortex” from Wikipedia

wraps to form a cranial
bay curve
table
winding from that
Boston Bostonian

I am not a New Englander but Cape Cod's shiver

hooks.
above is that Merrimack of mine
and skiing and reading,
collapsing into the cortex of itself, laughing:

*He is saying his haircut is always \$16
and when paying
he only asks for a dollar back*

There is not depression;

*You "thank you" through a drawl drawn
out and down with the staircase,
to a door held open for you that
you expect to be held open for you*

There is hope in you expecting;

Art!

There is a

silence after screams.

You are etched on my heart

DEFINITION

to engrave (metal, glass, or stone) by coating it with a protective layer, drawing on it with a needle, and then covering it with acid to attack the parts the needle has exposed, especially in order to produce prints from it: (as adj. **etched**) : *etched glass windows*.

There is the feeling come
back.

There is far too much feeling.

So I will go away from it now
and vacation on the Cape playing hand
games with anchors;
serotonin is the masthead and my boat is upside-down

So the anchors will dock in my direction,
and I will have a will to entertain them
with whispers. of little things the people around me do,
curving to drown a family secret:

*planning and expecting and art and feeling,
laying beach chairs out over the hook
and an umbrella,
to protect from the sun.*

Their little ticks are the curlicues
drawing on banalities concentrically, while
depressed people only draw on themselves.

Depressed people twist for nothing.
Depressed people know they know everything.
Depressed people are more realistic.

Depressed people neither maintain tip rituals nor
Drawl to held-open doors, nor create;
Depressed people are not in love.

(Am I depressed)
?

Definitions are what is known
in parses.
Wrap the cingulum by a numb-numbing curve, and
accept the prehensile word. eat clam
chowder.

Would 6 be a good time for dinner?

Feels like I'll be hungry by then

(You are quite good at monitoring the activity of your duodenum)

(It's nice to know you care about things)

